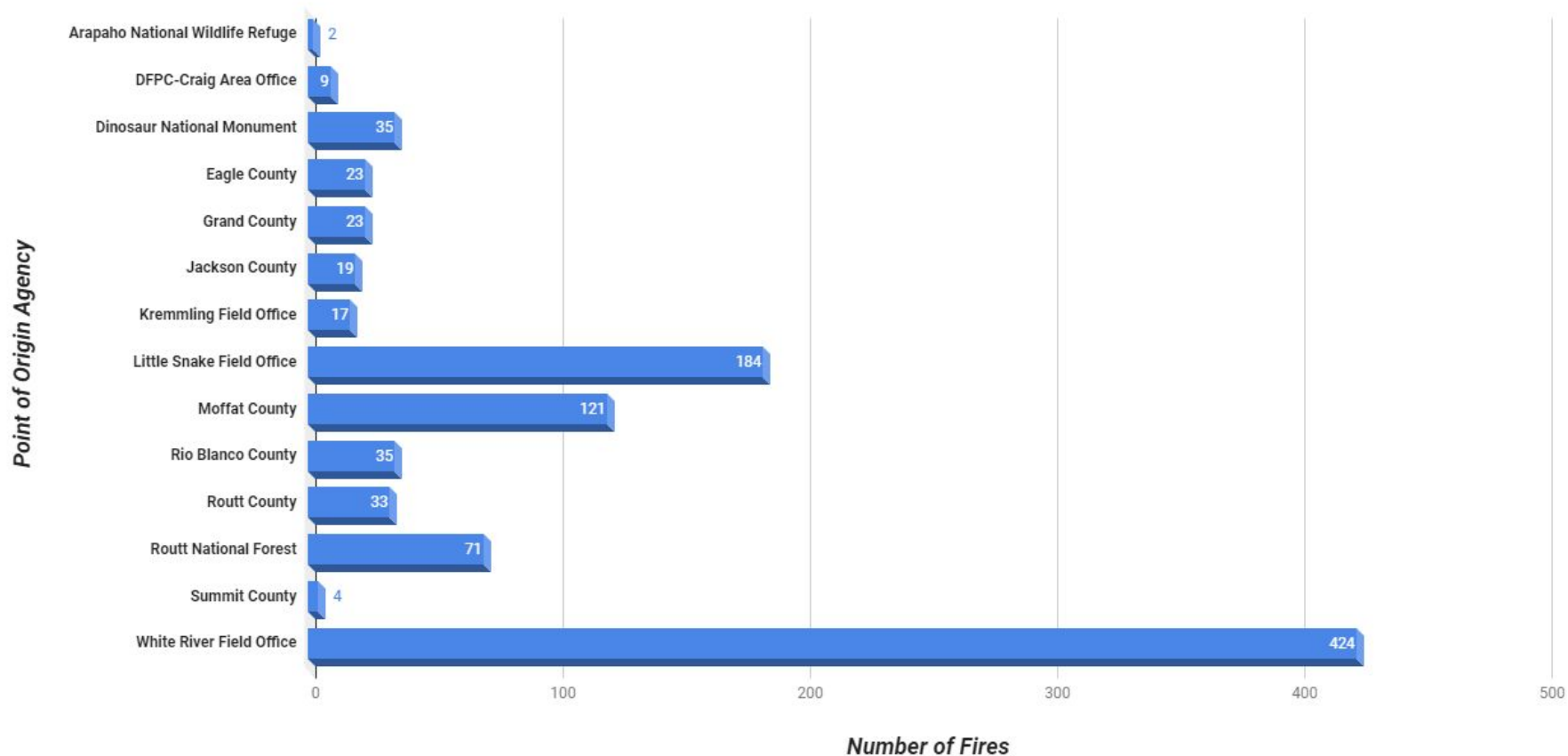
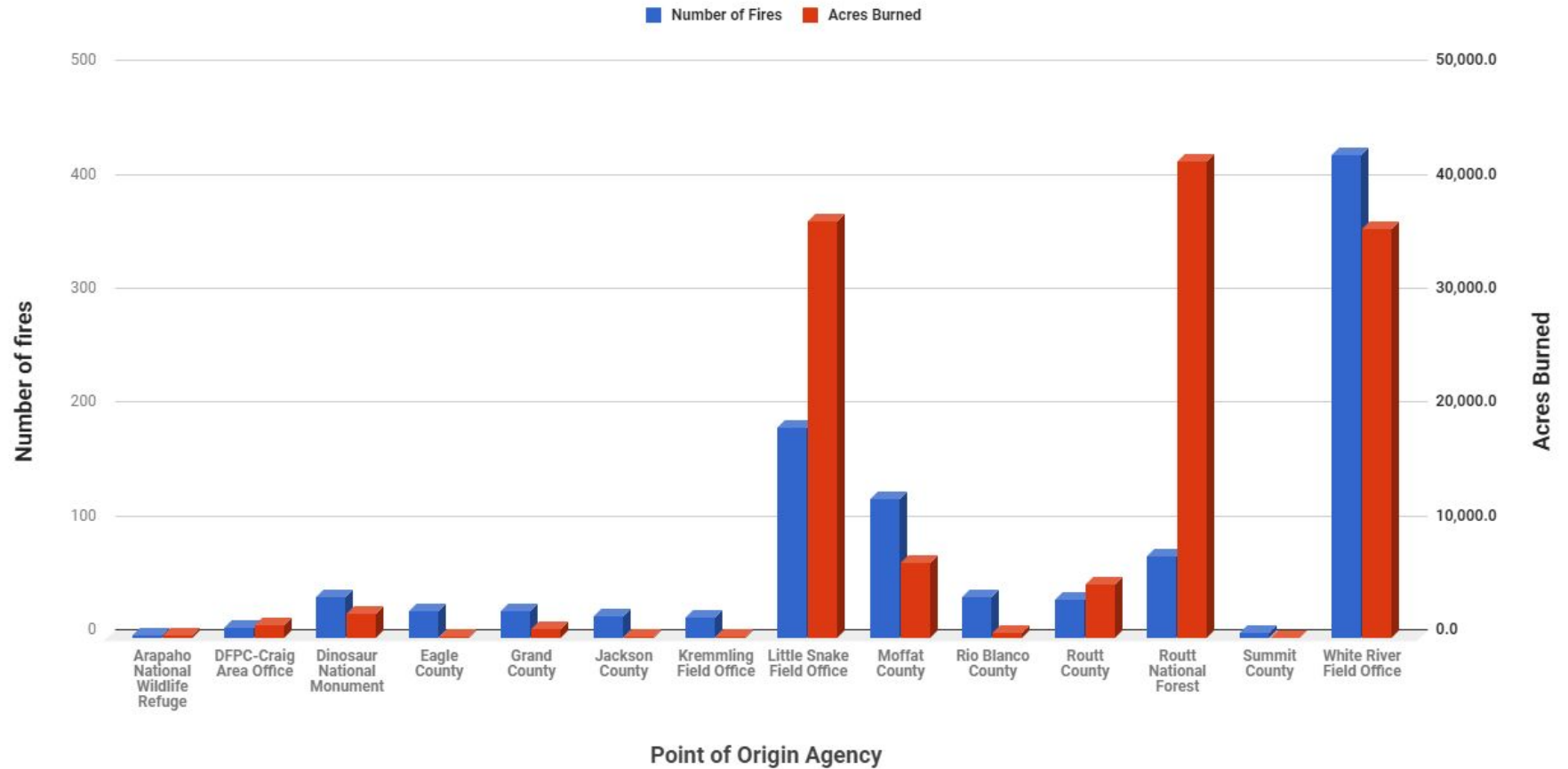


Craig Dispatch Area Fires and Acres Burned from 2013 to 2017

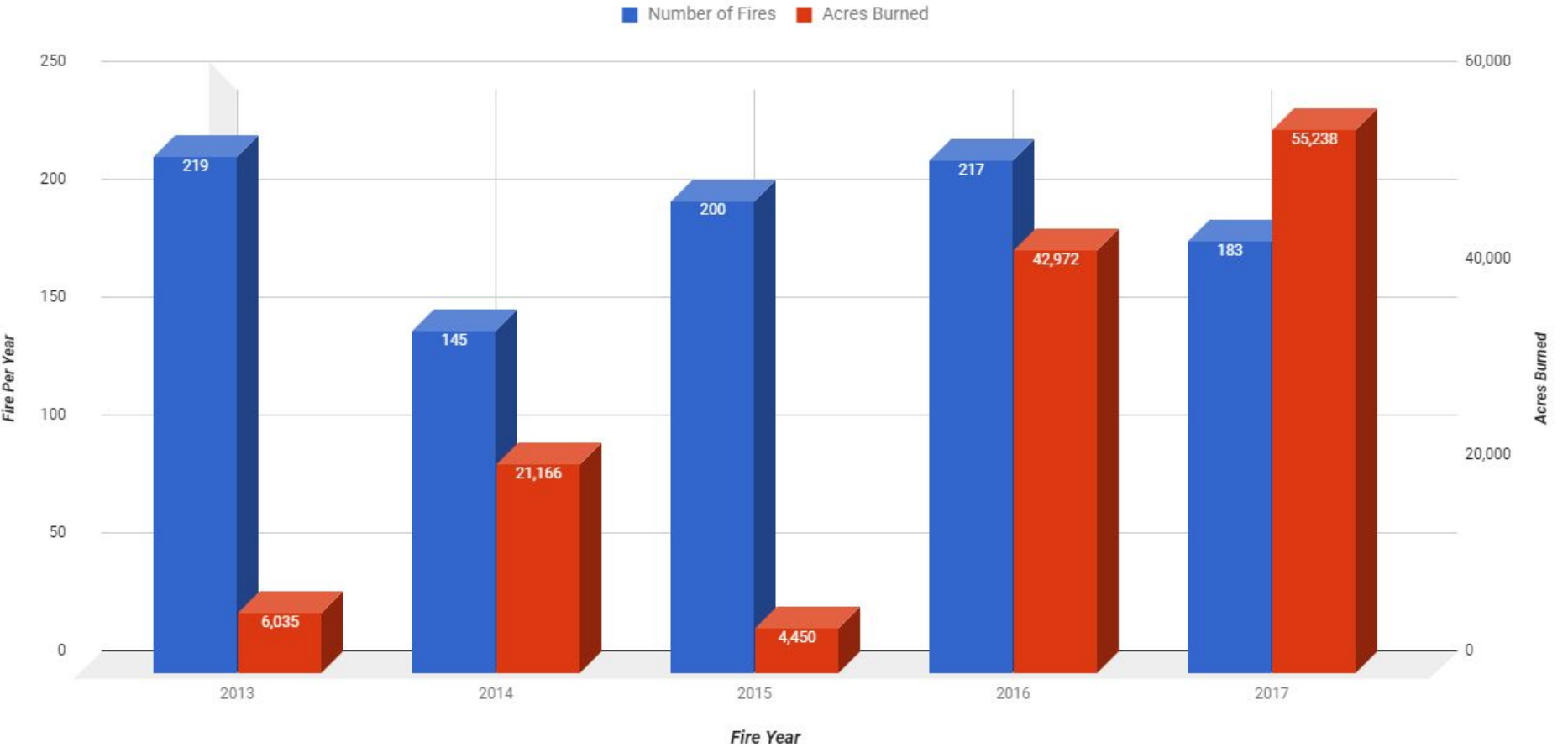
Number of Fires Per Agency or BLM Field Office



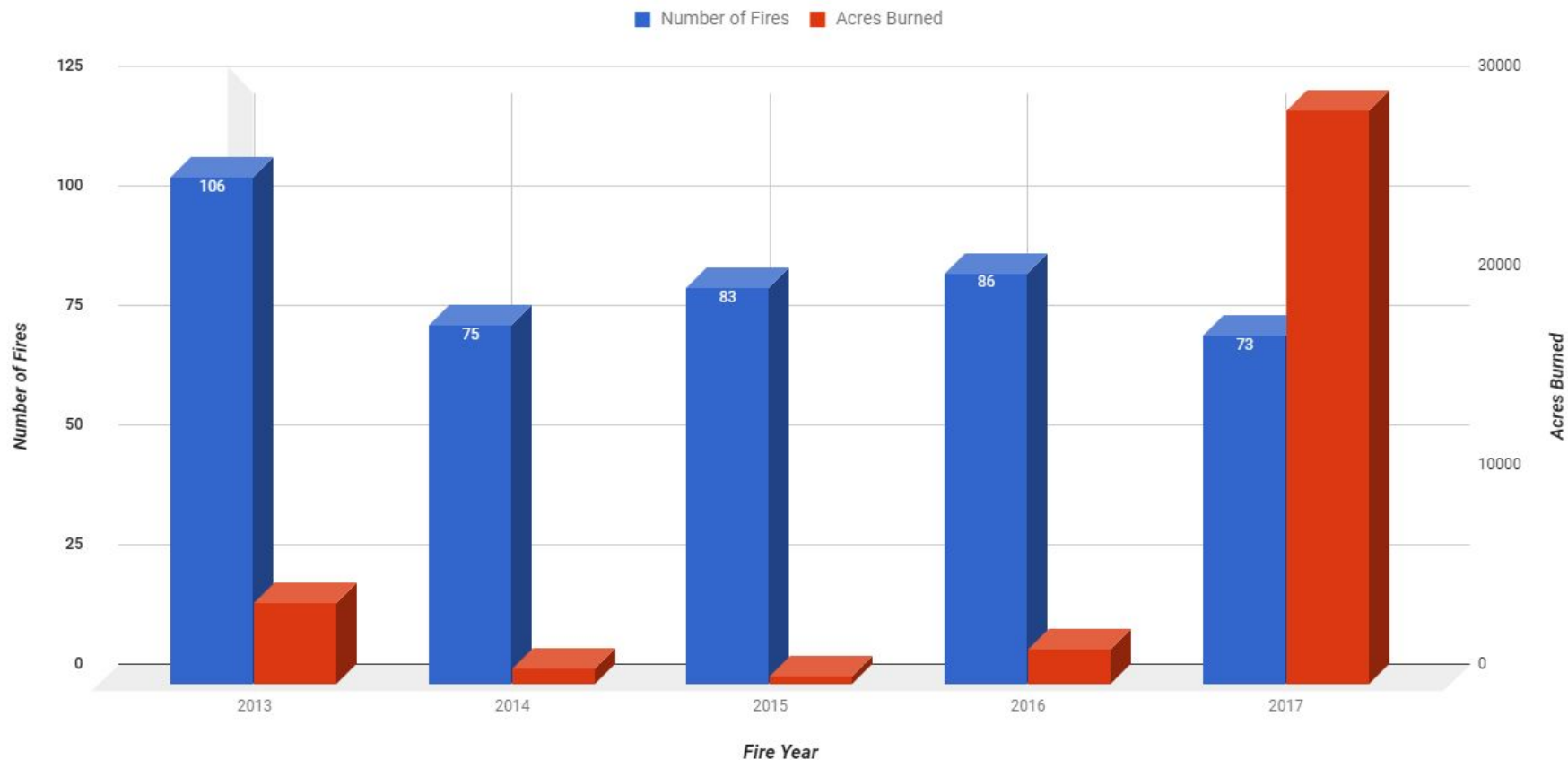
Number of Fires and Acres Burned Over Five Years Based on Point of Origin



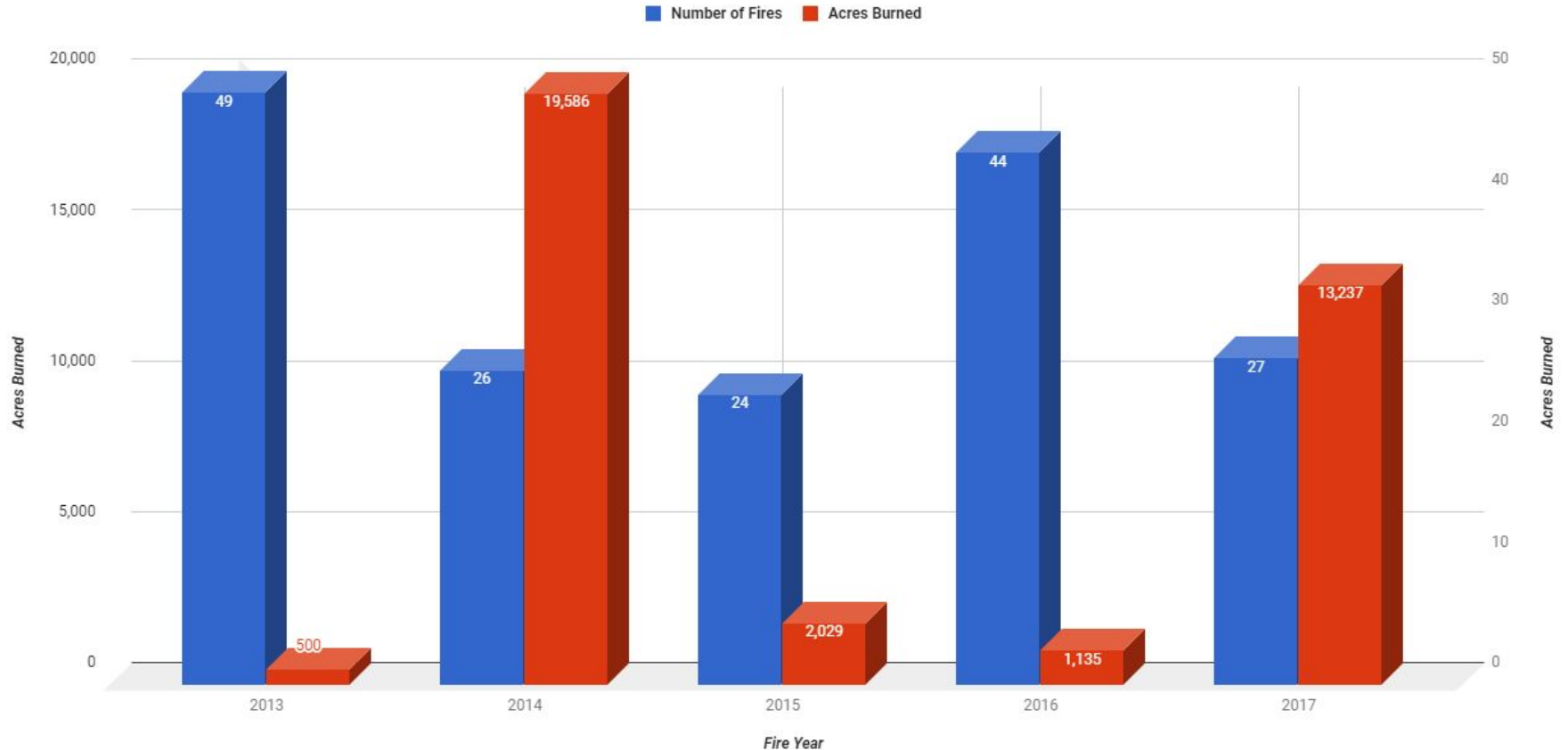
Fire and Acres Burned Per Year in the Craig Dispatch Area



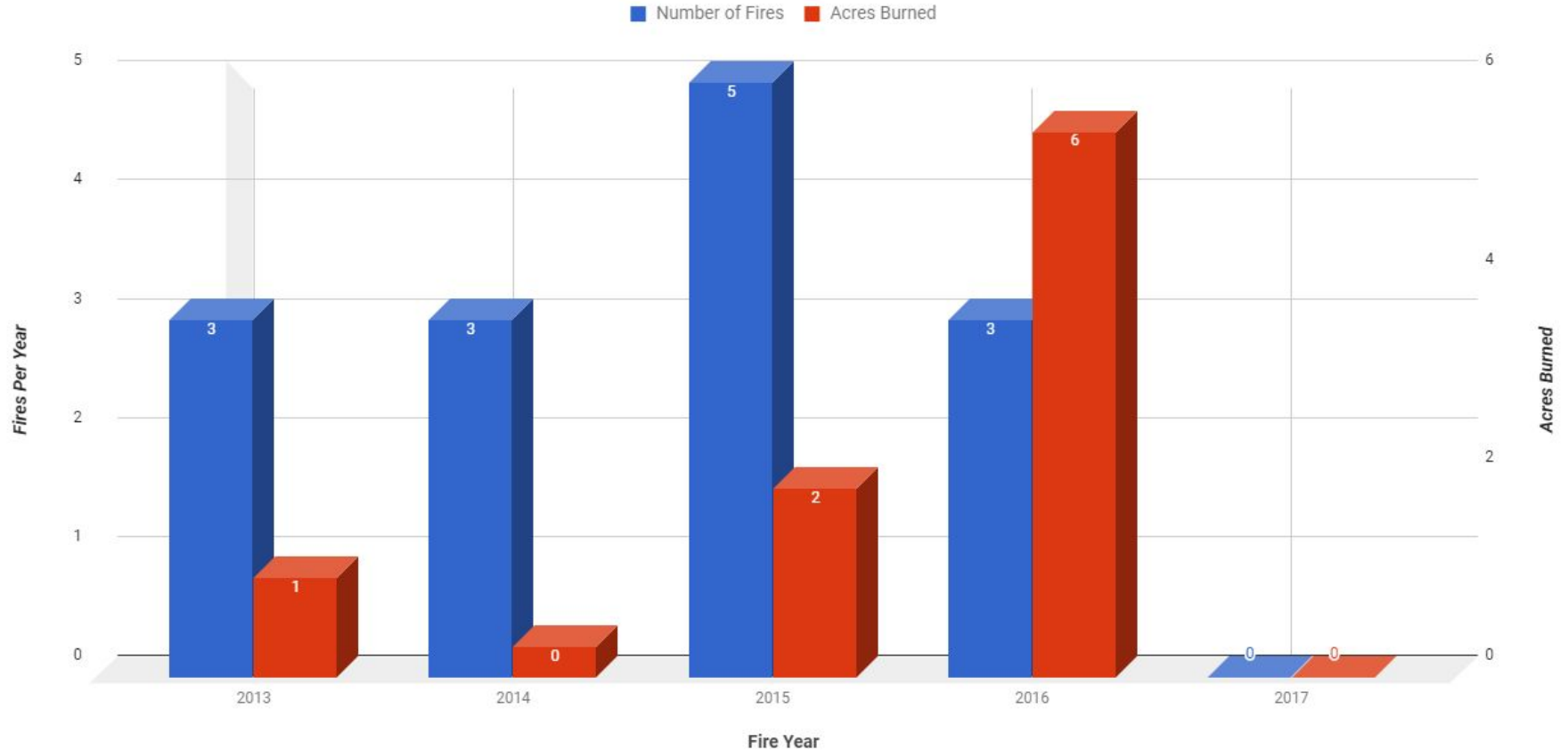
BLM White River Field Office Fires and Acres Burned from 2013 through 2017



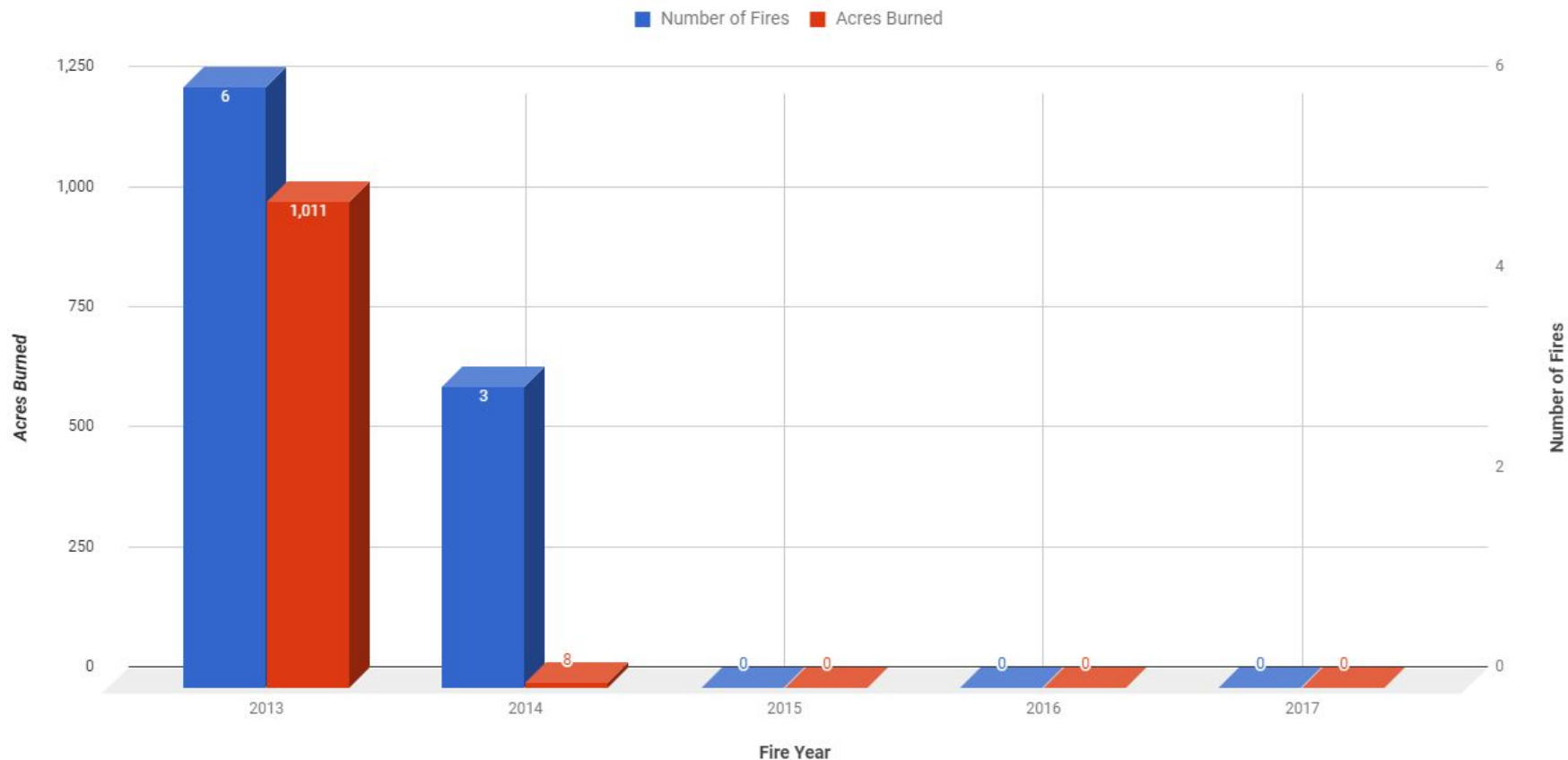
BLM Little Snake Field Office Fires and Acres Burned from 2013 Through 2017



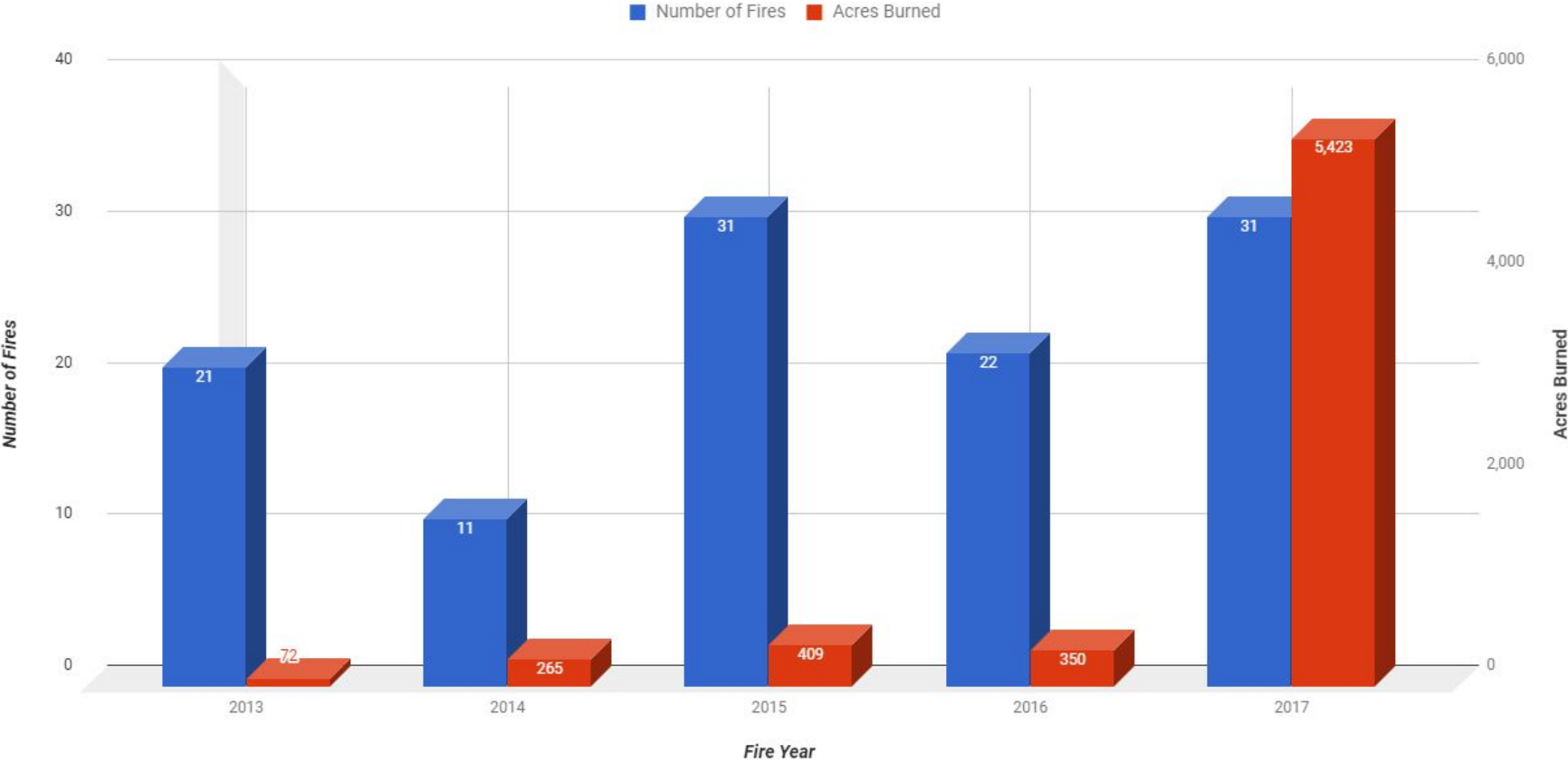
BLM Kremmling Field Office Fires and Acres Burned From 2013 Through 2017



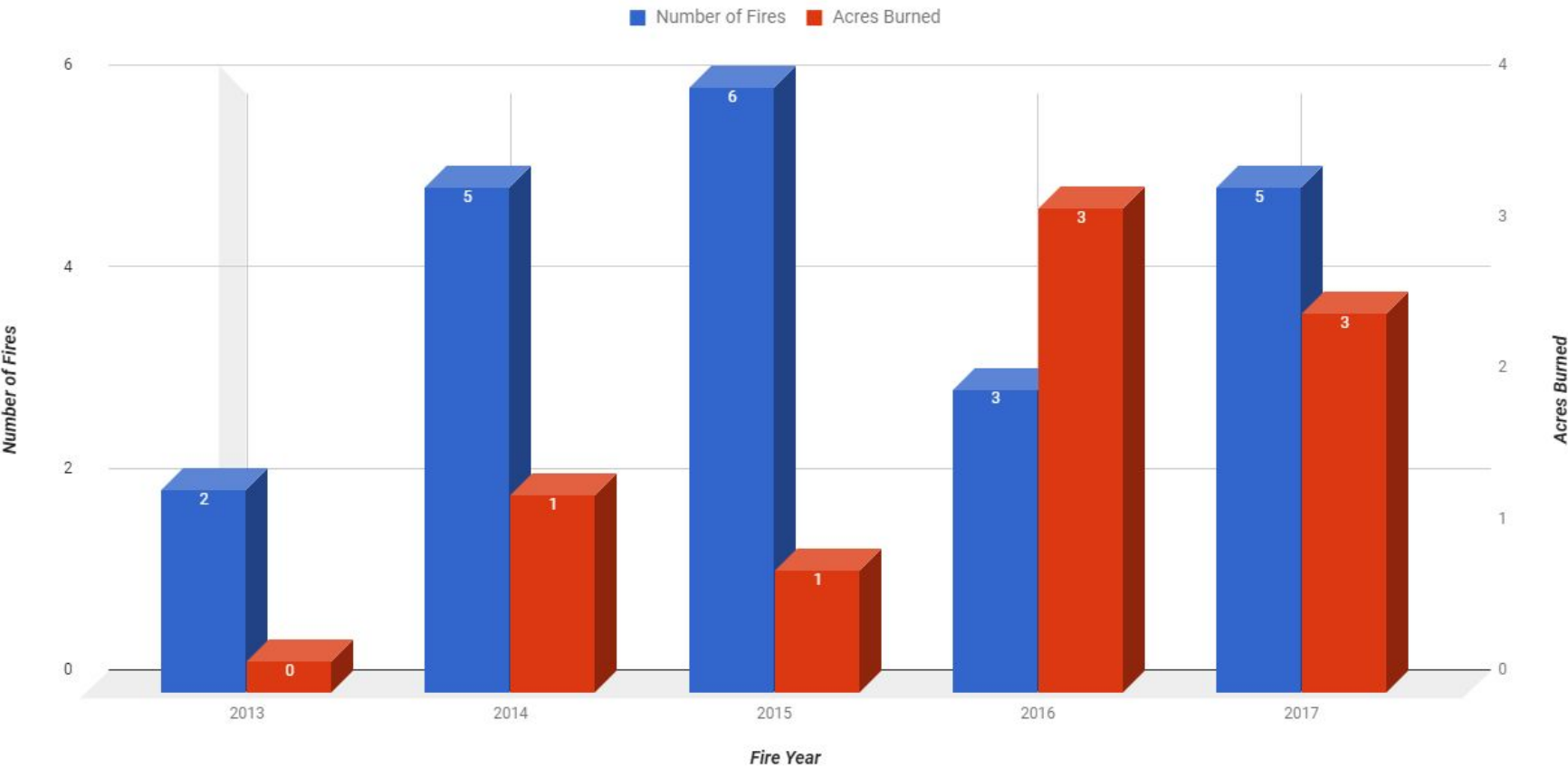
Colorado State Lands Fires and Acres Burned From 2013 Through 2017



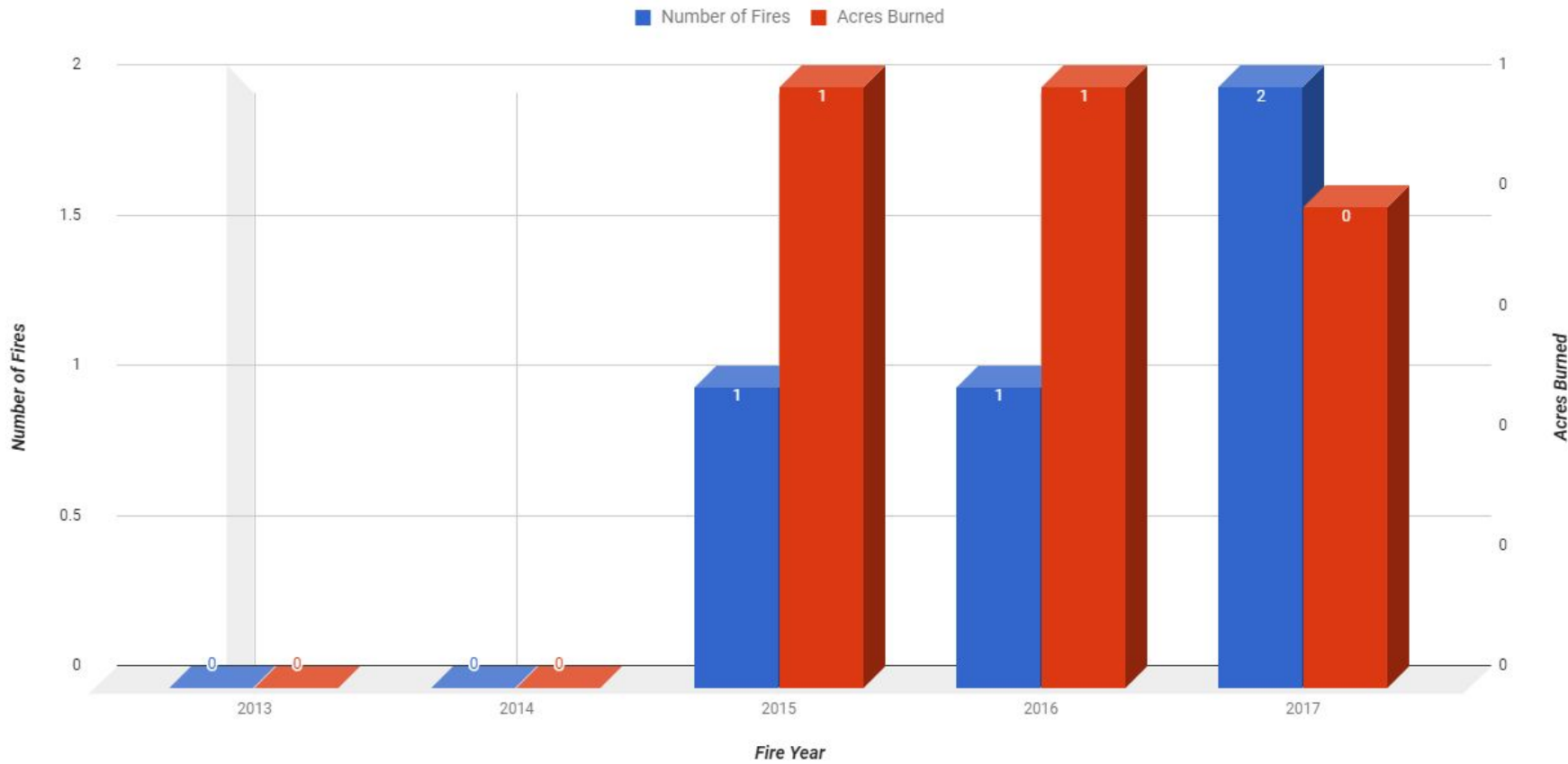
Moffat County Fires and Acres Burned From 2013 Through 2017



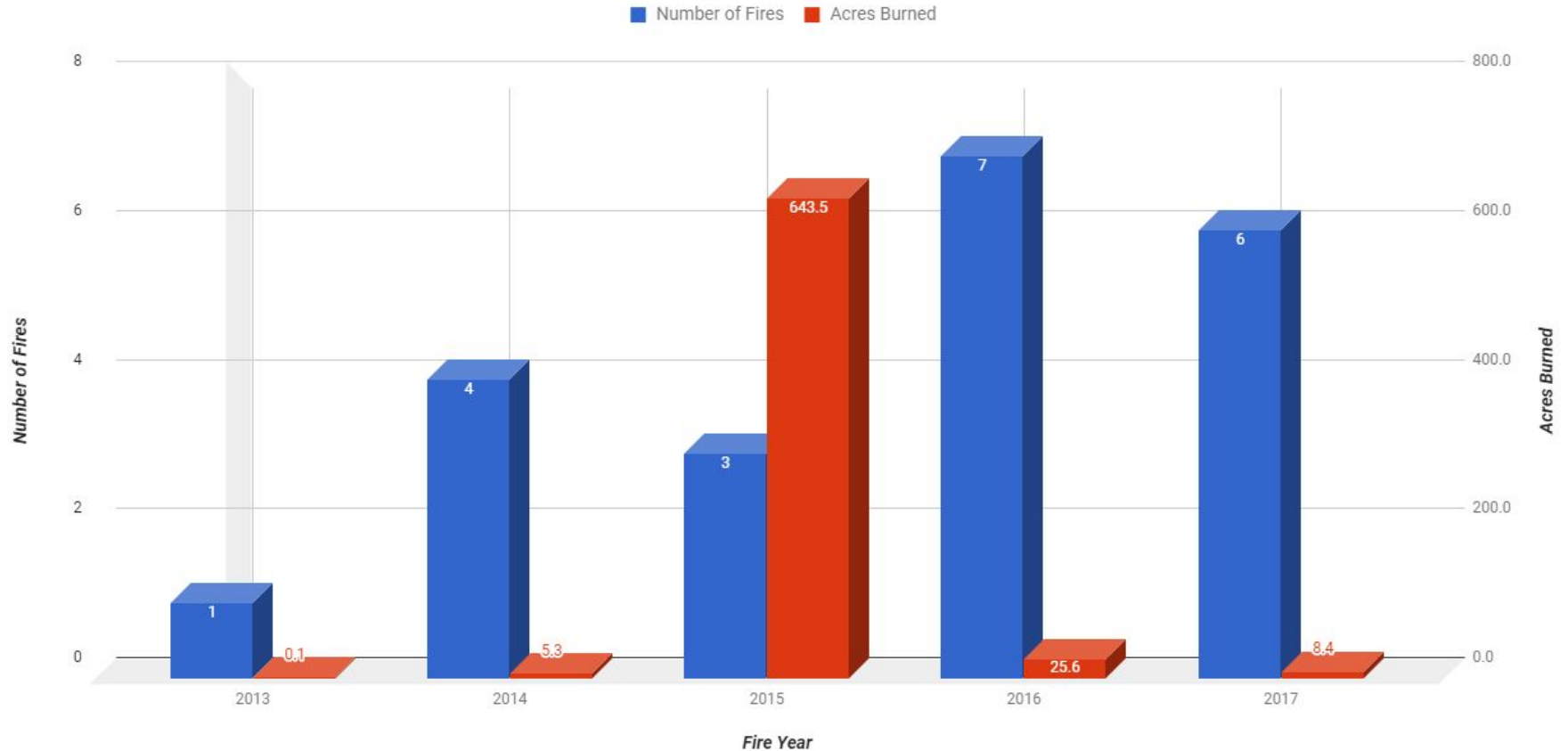
Eagle County Fires and Acres Burned From 2013 Through 2017



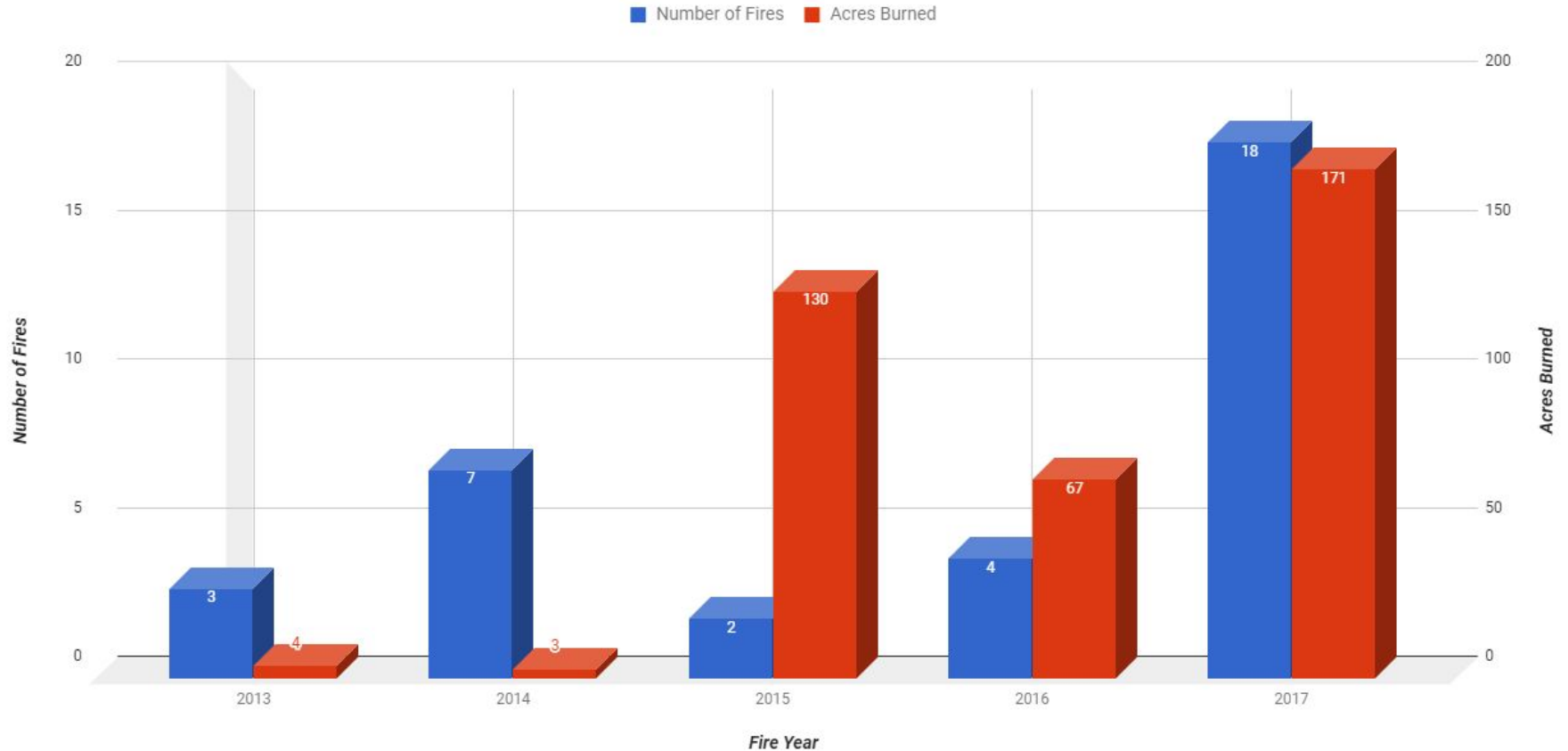
Summit County Fires and Acres Burned from 2013 Through 2017



Grand County Fires and Acres Burned from 2013 Through 2017

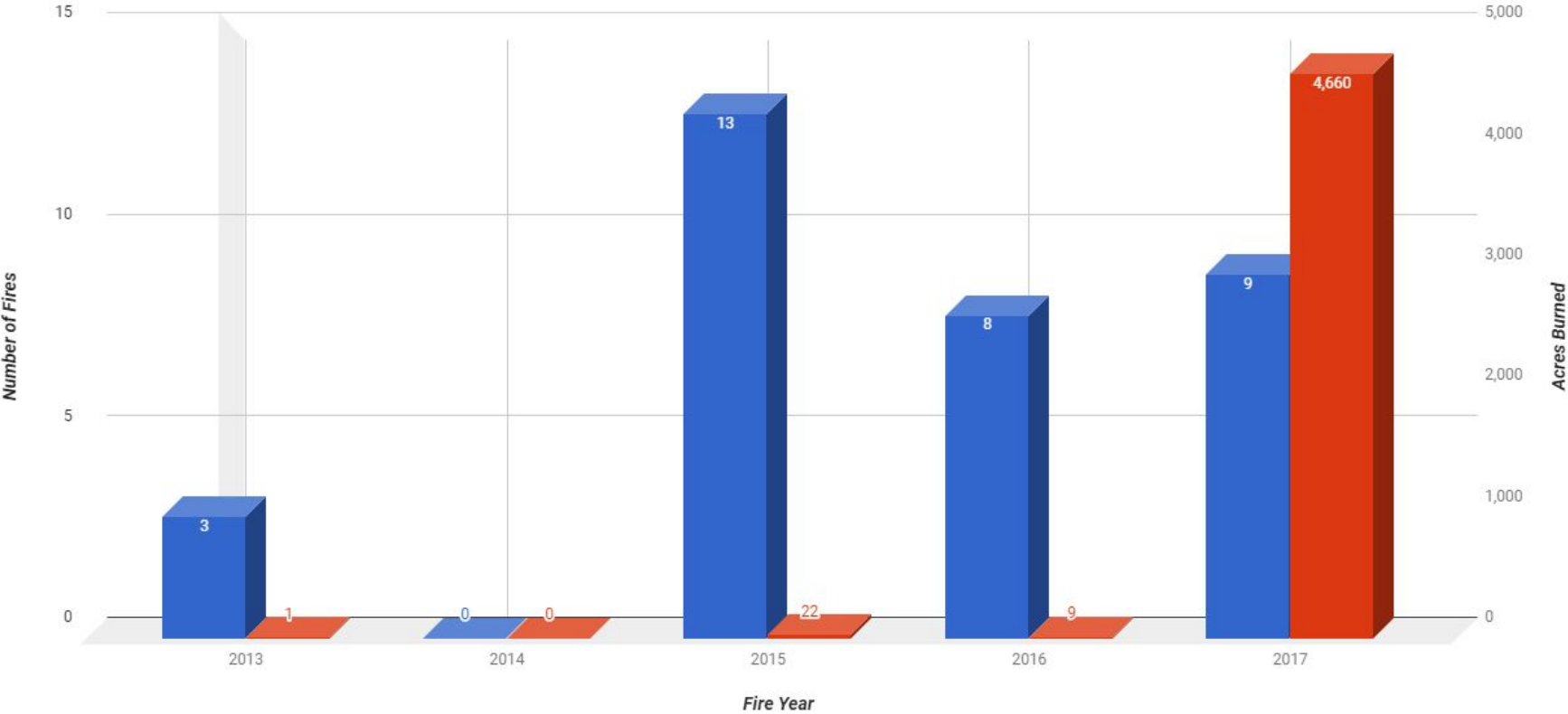


Rio Blanco County Fire and Acres Burned from 2013 Through 2017

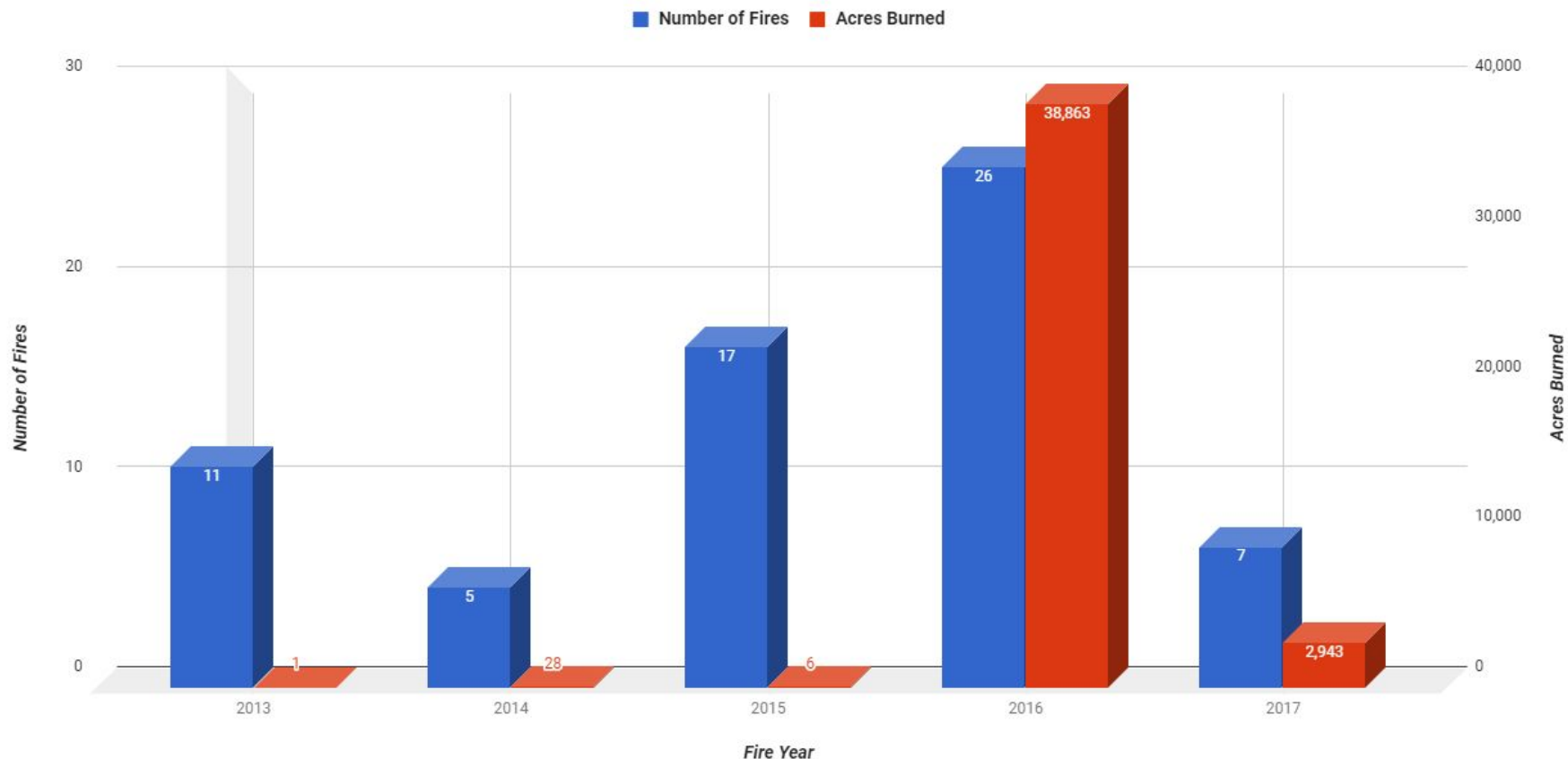


Routt County Fires and Acres Burn from 2013 Through 2017

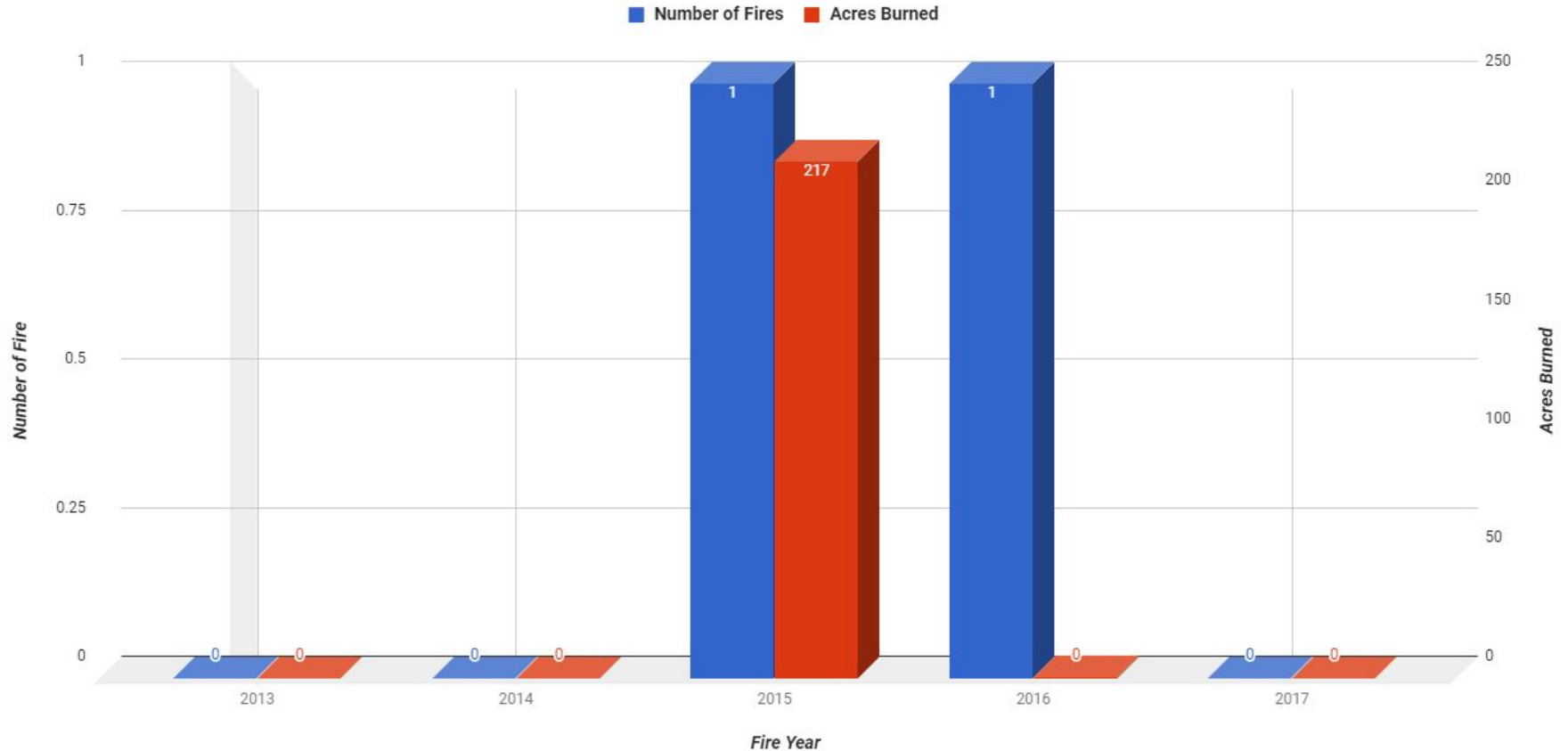
■ Number of Fires ■ Acres Burned



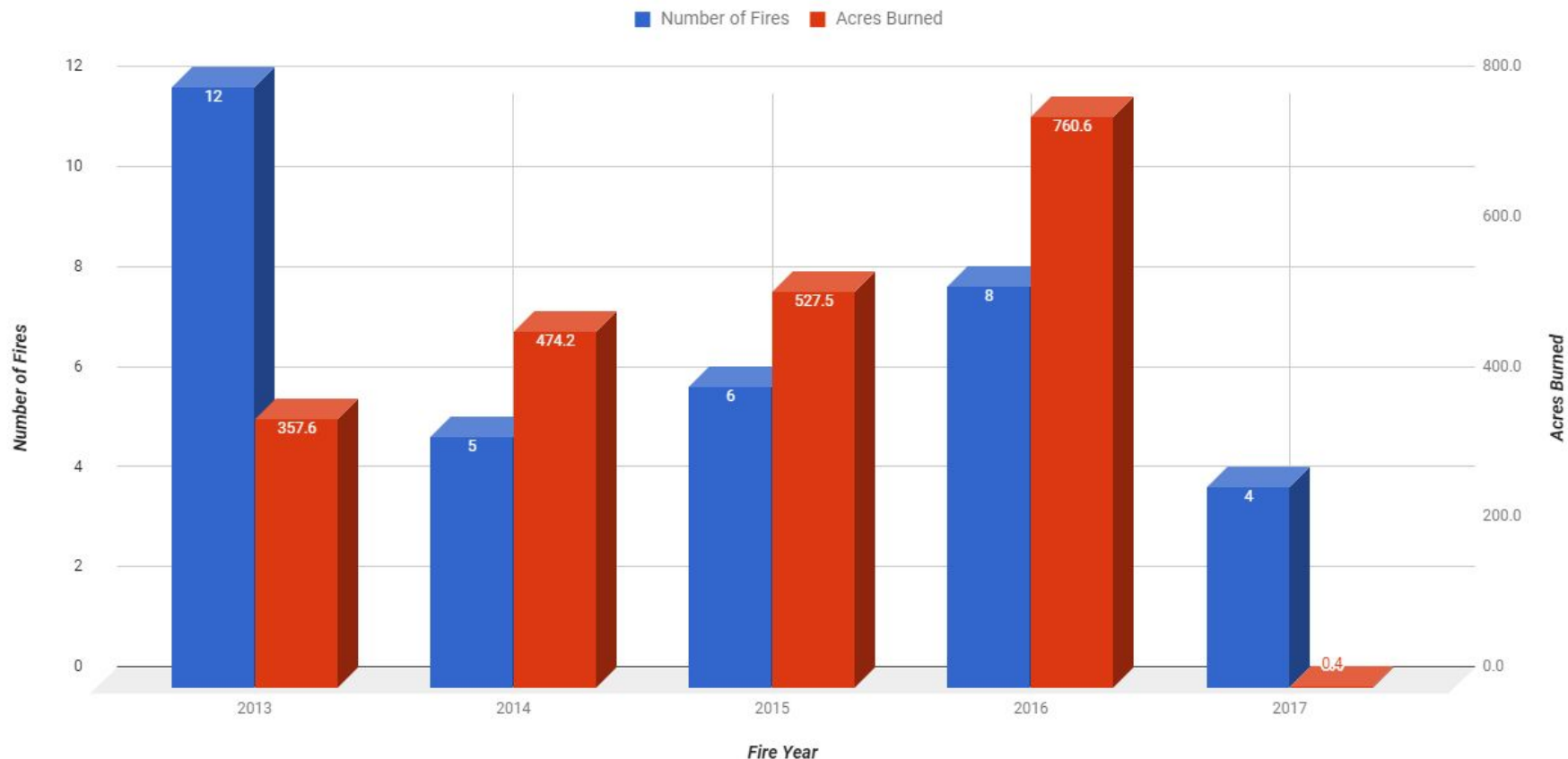
Routt National Forest Fires and Acres Burned from 2013 Through 2017



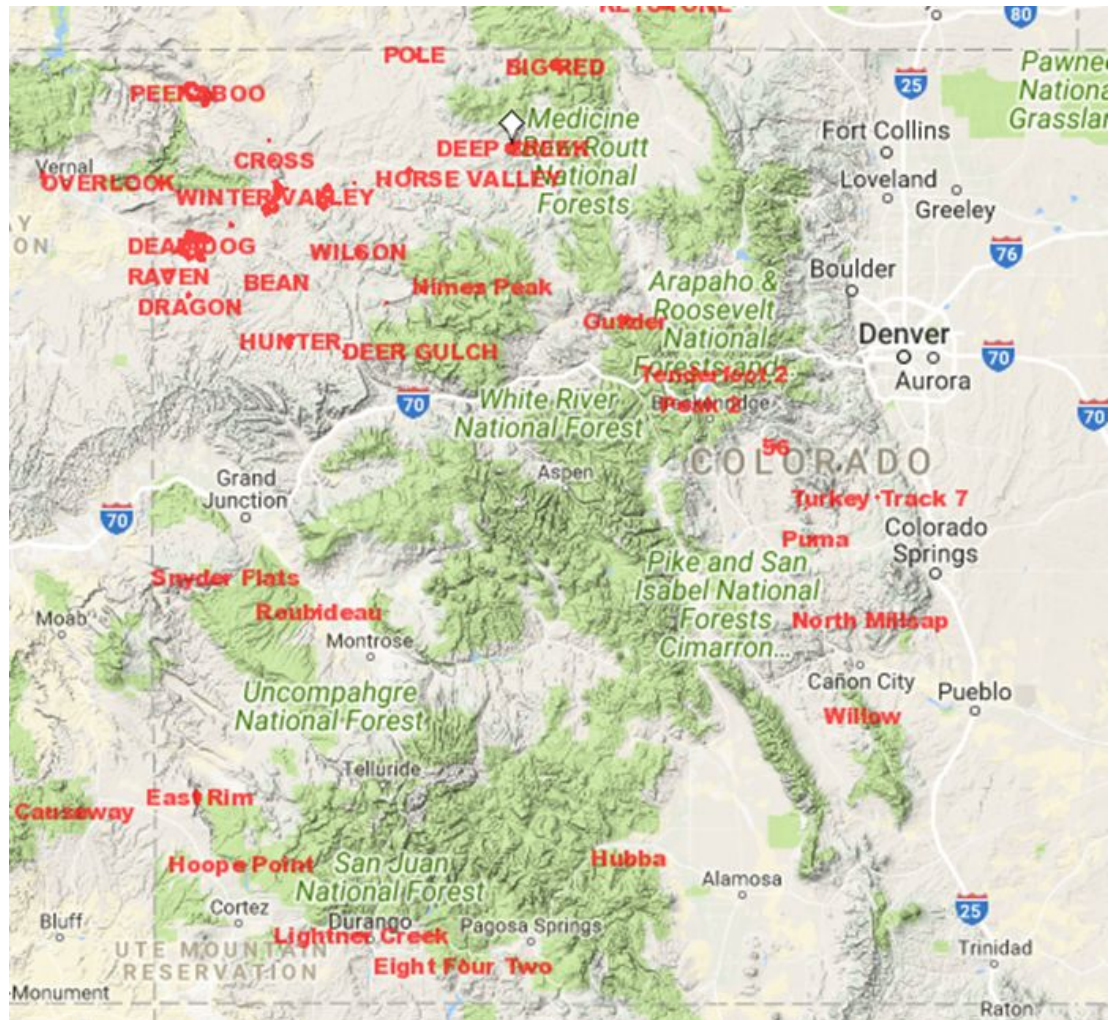
Arapaho National Wildlife Refuge Fire and Acres Burned from 2013 Through 2017



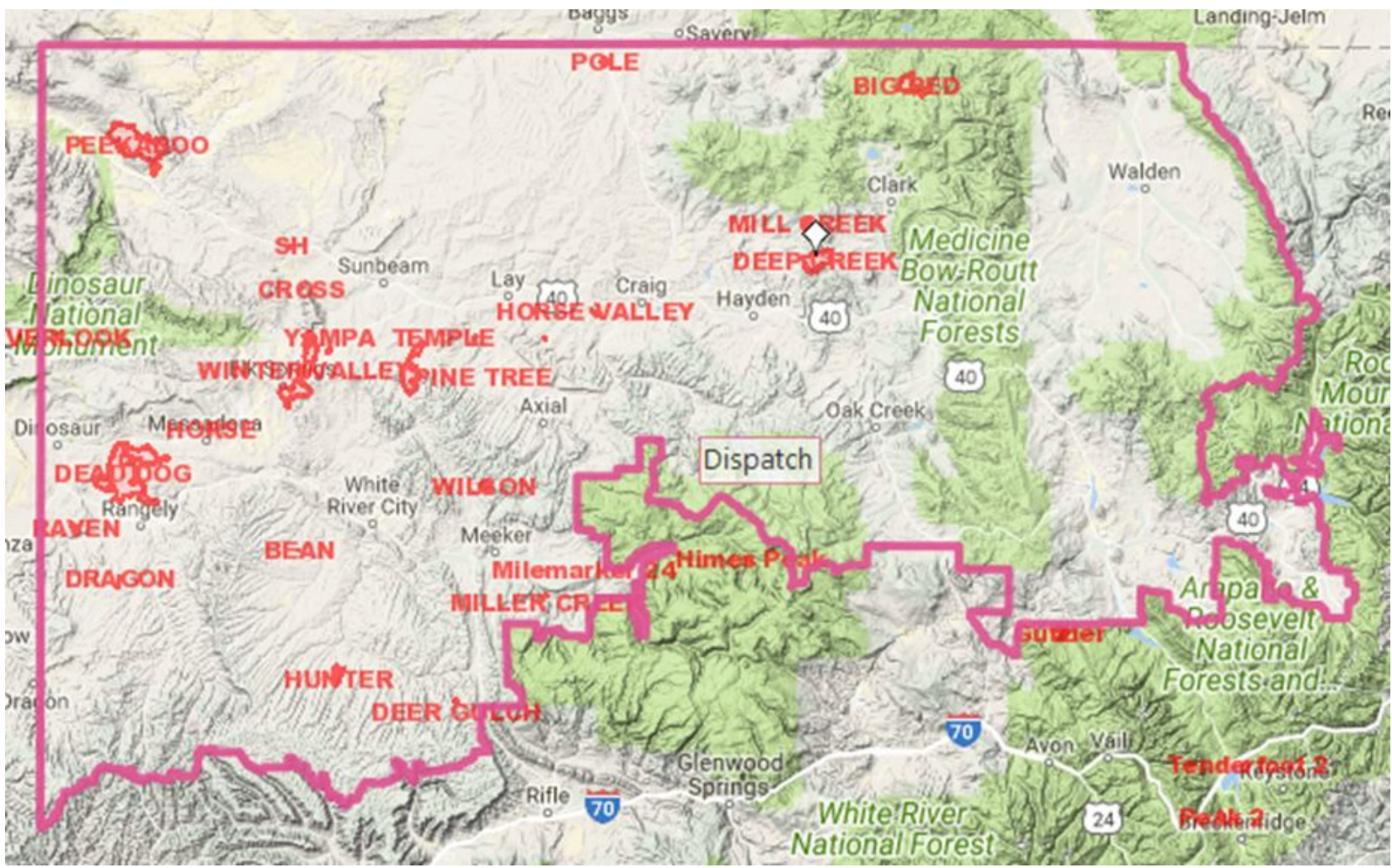
Dinosaur National Monument Fires and Acres Burned From 2013 Through 2017



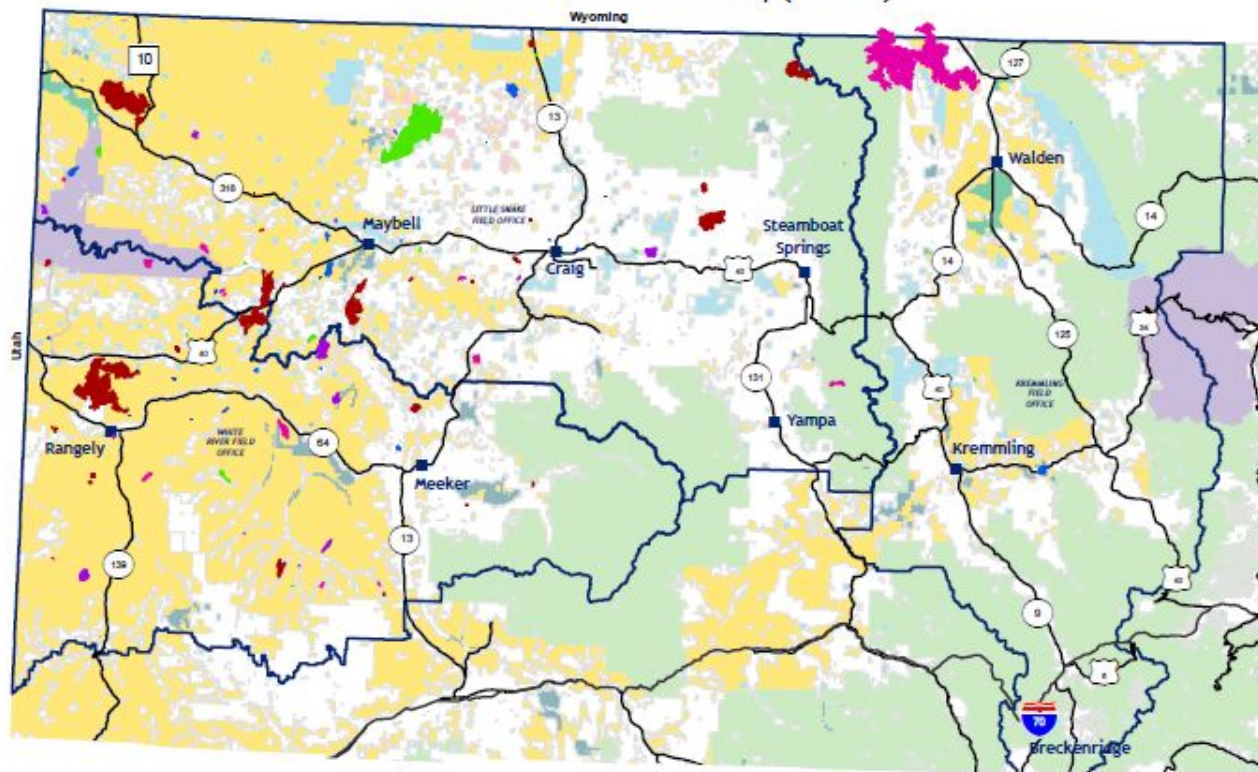
2017 Fires with Perimeters for the State of Colorado Pulled from WFDSS



2017 Fire
Locations
for the
Craig
Dispatch
Area



Northwest Colorado Fire Management Unit 2013 - 2017 Wildland Fire Activity (5+ acres)



Legend

- | | | | |
|-----------------------------------|---------------------------|-----------------------|------------------------------|
| 2017 Fires (26 for 55,157 acres) | Bureau of Land Management | National Park Service | State, County, City; Areas |
| 2016 Fires (15 for 41,554 acres) | BLM LU Lands | Other Federal | US Fish and Wildlife Service |
| 2015 Fires (22 for 3,735 acres) | Bureau of Reclamation | Private | US Forest Service |
| 2014 Fires (17 for 21,158 acres) | Military Reservation | State | |
| 2013 Fires (12 for 5,956 acres) | | | |
| BLM Field Office Areas Boundaries | | | |



No warranty is made by the Bureau of Land Management as to the accuracy, reliability, or completeness of these data for individual use or aggregation use with other data. All boundaries are an approximate representation.

10/5/2017

2017 Fire Related Injuries

- Temple Fire 2nd Degree Burns to the legs 06/10/2017
- Possible Hernia CA-1 is being filled out
- Separated Rib (Craig Hotshots) put on light duty
- Cut finger putting hand in pocket (BLM Employee)
- Cut hand carrying chainsaw (BLM Employee on FS Fire)
- Respiratory issue (light duty for three weeks)
- Twisted Ankle stepped off curb. Put on light duty
- Twisted Knee stepped off curb. Put on light duty

Retardant Dropped over the Last Six Years

Craig SEAT Base Only

2017 ---193,559 TOTAL Gallons:162,039 Retardant,
22,990 Thermogel, 8,530 Water

2016 ---SEAT Base Closed

2015 ---SEAT Base Closed

2014 --- 19,141 Retardant

2013 --- 41,080 Retardant

2012 --- 142,072 Retardant

Trainings



- **Local Spring Academy**
 - ◆ **S-330 Taskforce/Strike Team Leader**
 - ◆ **L-280 Followership to Leadership In Craig**
 - ◆ **S-270 Basic Air Operations with**
 - ◆ **S-230 Single Resource Boss**
 - ◆ **S-219 Firing Operations**
 - ◆ **S-215 Wildland Urban Interface**
 - ◆ **S-212 Power Saws in Craig**
 - ◆ **S-211 Portable Pumps and Water**
 - ◆ **D-110 Dispatch Recorder**
 - ◆ **S-212 Power Saws in Kremmling**
 - ◆ **S-230 Single Resource Boss in Meeker**
 - ◆ **S-231 Engine Boss in Meeker**
 - ◆ **L-280 Followership to Leadership in Meeker**
 - ◆ **S-130, S-290, L-180 I-100 Basic Fire School to Meeker VFD's**
- **Put on Five WFDSS and Three Resource Advisor Trainings Locally**
- **Rio Blanco Domestic Terrorist Multi-Day Simulation**